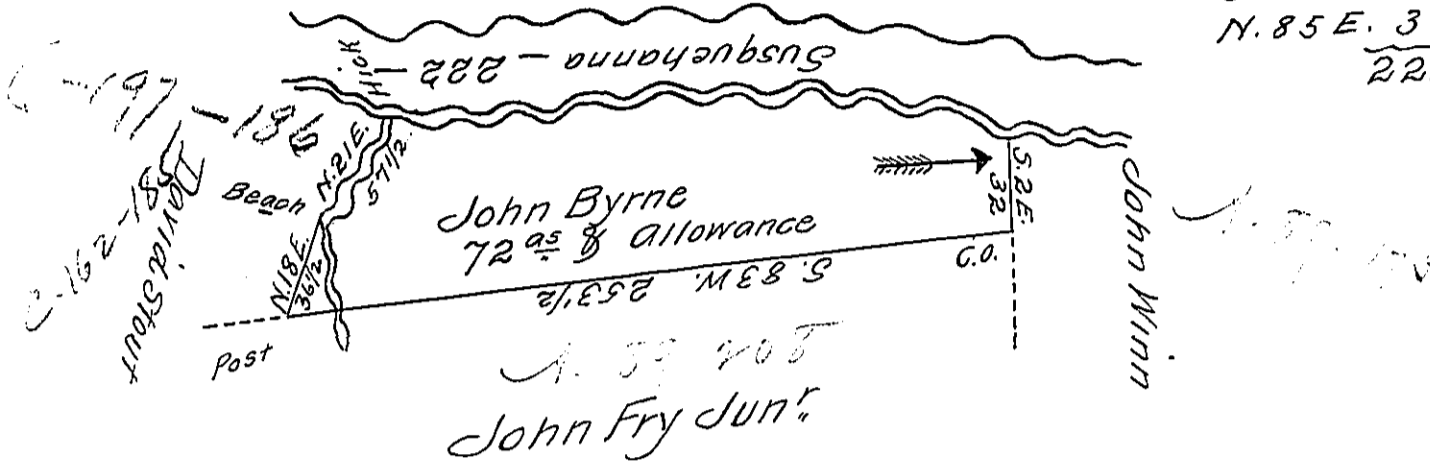


Courses & Distances  
of the River

S. 76 E. 96
S. 86 E. 88
N. 85 E. 38
<u>222</u>



The draft of a tract of land situate in Fye Township Cumberland County  
 Containing Seventy two Acres & Allowances Surveyed 27<sup>th</sup> April  
 1769 Resurveyed 27<sup>th</sup> March 1817 in pursuance of a Warrant  
 Granted to John Byrne Dated 19<sup>th</sup> March A.D. 1755—

Rob<sup>t</sup>. Clark D.S.

To Rich<sup>d</sup>. T. Leech Esquire  
 Surveyor General of Pennsylvania }

IN TESTIMONY that the above is a copy of the original remaining on file in  
 the Department of Internal Affairs of Pennsylvania, made  
 conformably to an Act of Assembly approved the 16th day of  
 February, 1833, I have hereunto set my Hand and caused  
 the Seal of said Department to be affixed at Harrisburg,  
 this Tenth day of October 1911

*Henry Horner*  
 Secretary of Internal Affairs.